



KIT BPP Fall Training 2024-2025 School Year

Thanks for being part of the EPS KIT Team!





McKinney Vento Quiz



Today's goals



**McKinney-Vento and
Foster Education Support**

Amy Perusse
EPS KIT Coordinator
McKinney-Vento Liaison

Abby Mayers
Foster Liaison/Family and Community
Engagement Coordinator

Lyn Lauzon & Conchita Chinchilla
Family Resource Center Coordinators

Diane Indivero
KIT Admin Assistant

Overview of Who, Why, and How we support

- Review McKinney-Vento definitions
- Identifying KIT students
- Supports and resources

Updates & Announcements

- Family Resource Centers- Impacts and updates
- Collaboration & partnership updates

Where to find more information

- KIT Staff toolkit
- Other great resources, training, and PD opportunities

Who are you going to call??



- Cedar Wood
- Emerson
- Garfield
- Hawthorne
- Jackson Elementary
- Jefferson
- Lowell
- Madison
- Silver Firs
- Silver Lake
- View Ridge
- Whittier

All foster youth!

Abby's Schools

- Forest View
- Mill Creek
- Monroe
- Penny Creek
- Port Gardner
- Tambark Creek
- Woodside
- Eisenhower
- Evergreen
- Gateway
- Heatherwood
- North
- Cascade
- Everett High
- Jackson High
- Sequoia

Amy's Schools

McKinney-
Vento and
Foster
Education
Support

KIT Overview



KIT Total
so far for 24-25
1046

M-V Total
1002

Foster
Only Total
40

M-V & Foster
(Dual support)
Total
4

UHY
182

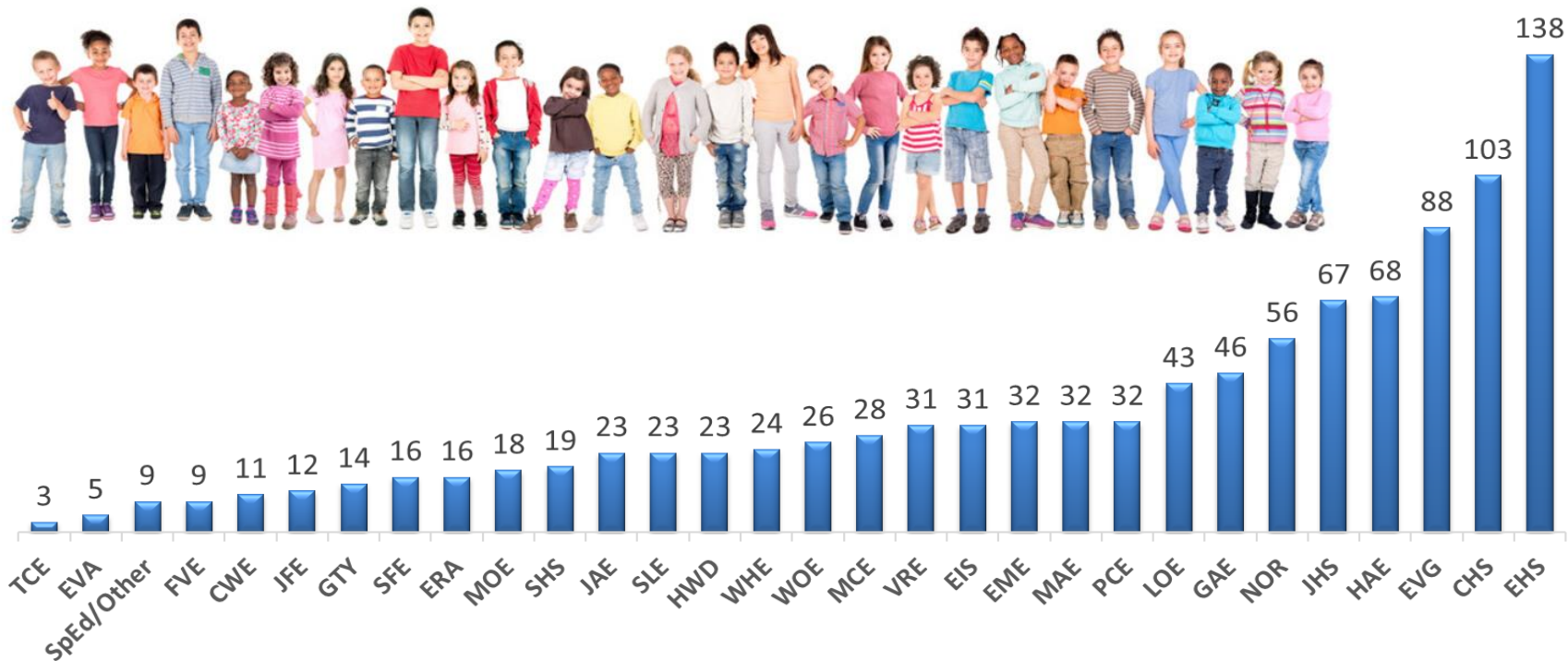


Kids in Transition

1,046 Identified and supported so far



KIT by Building 24-25 school year as of 10.7.24 (n=1046)

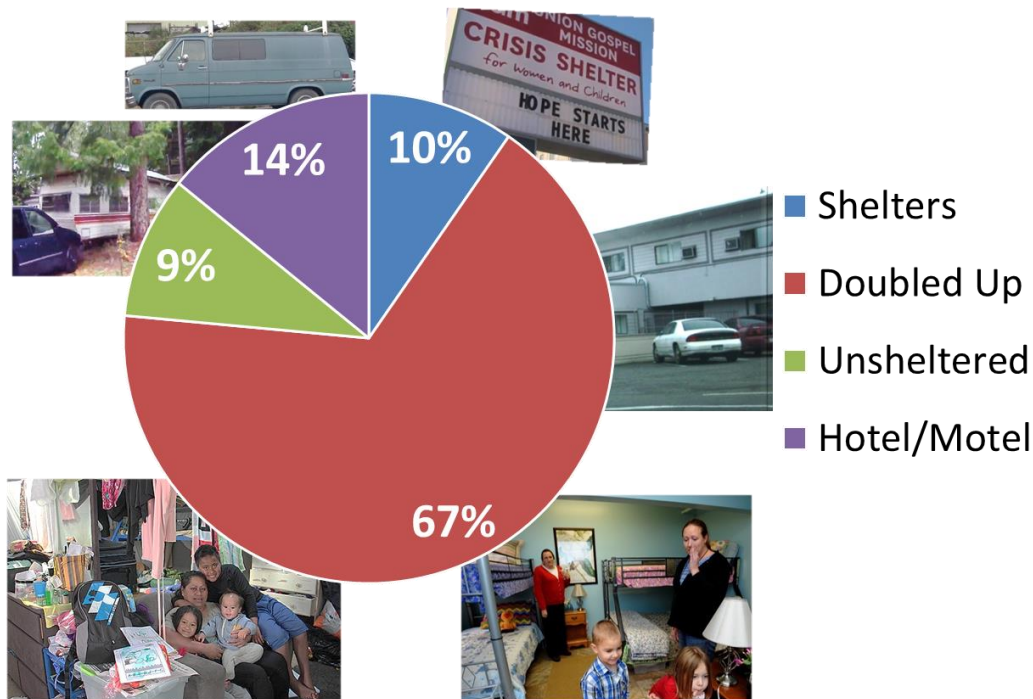




A more inclusive definition of “homeless”

Children & Youth who lack a fixed, regular, and adequate nighttime residence

- Students move between these situations during the school year
- Lack of shelter in most communities; fear of shelter
- Lack of motels/hotels in most communities; inability to pay
- Children and youth “staying with others temporarily” are extremely vulnerable to predation/harm but more difficult to identify



Eligible situations are coded at the time of identification, most are moving around so could be different from night to night.

Unaccompanied Homeless Youth (UHY)

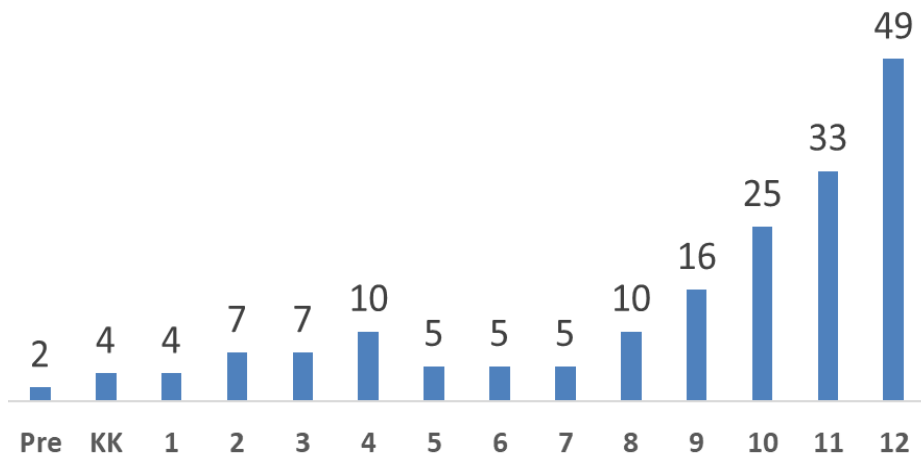


*“A child or youth without a fixed, regular, and adequate nighttime residence
and not in the physical custody of a parent or guardian.”*

Can be any age...

Many due to unexpected parental death, incarceration, or conflicts in the home.

UHY By Grade Level as of 10.7.24 (n=182)



Youth may runaway due to abuse or neglect.

Parents force youth out of the home due to conflicts many times related to sexual orientation, gender identity, and pregnancy.



Homelessness is complex, with inter-related factors.

For Families with Children:

- Lack of safe, stable, affordable housing
- Eviction
- Unemployment/low wages
- Domestic violence
- Housing discrimination
- Health issues (including mental health and addiction disorders)
- Natural disasters

For Youth on Their Own:

- Abuse or neglect
- Death of a parent or caregiver
- Incarceration of parent or caregiver
- Parental abandonment
- Parents/caregivers may force youth out of the home due to conflicts about pregnancy, or sexual orientation/identity

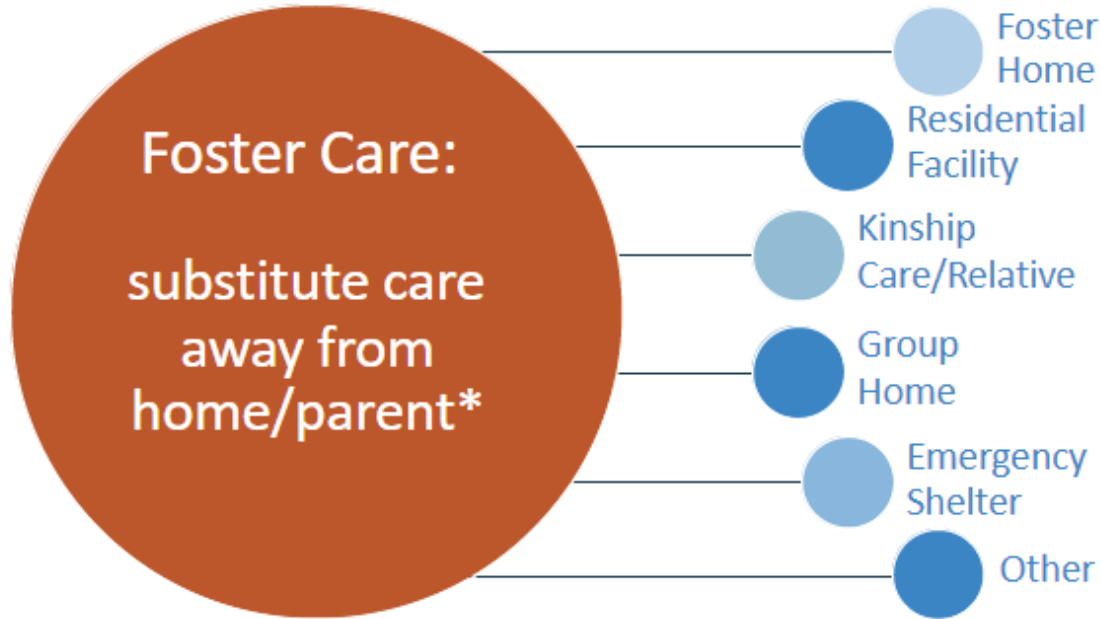


Challenges

- Misunderstanding the definition of homelessness
- Fear of self-identifying
- Moving around and changing schools
- Children under five are particularly invisible
- Liaisons cannot do it alone!

Strategies

- Avoid using the word “homeless;” consider instead asking about the relative permanence or stability of the living situation.
- Be aware of possible signs of homelessness and how to refer students to the liaison.
- Embed questions and information about homelessness in all school enrollment documents and outreach efforts.
- Review [this checklist](#) to ensure that online enrollment systems do not create barriers for families or youth experiencing homelessness.
- Post [flyers](#) in schools, on websites and social media, and in the community.
- Stay in touch with identified students and families on a regular schedule (use weekly “check-in” forms; provide pre-paid cell phones).
- Ask about younger siblings.
- Provide information about McKinney-Vento rights and services to community-based organizations who serve students who are at higher risk of homelessness (organizations serving immigrant families, Native families, LGBTQ+ youth, families and youth of color, and pregnant and parenting youth).



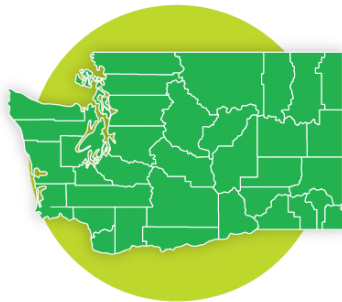
**Child Welfare Agency has PLACEMENT, CARE, & AUTHORITY
May also include: Tribal Foster Care & Federal Foster Care*



Washington state recorded

4,570

placement exception nights in
FY23 for children and youth under
age 18 who were in care.



Source: US Department of Health and Human Services

In Washington state,

44%

of youth who experienced
foster care also experienced
homelessness before the
age of 17.

BEST INTEREST DETERMINATION

Best interest determination meetings should be made as quickly as possible in order to prevent educational discontinuity for the student.

Who Should Be at the Meeting

Parents | Foster Parents | Caregiver | Foster Care Liaison | Caseworker |
CASA | Treehouse Advocates | IEP Team Members | Child's Attorney
Student (if appropriate)

In Person, virtually, or by phone are preferred. Must be a group decision.

Student must remain at school of origin while best interest
determination is made and disputes are resolved.

STUDENT-CENTERED FACTORS



Age



Length of
Placement



Special Needs



Timing of
School Year



Grade Level



Existing
Connection

Source: Washington State Office of the Family and Children's Ombuds



treehouse

- Educational Advocacy
- Graduation Success
- Treehouse Store
- Just-in-time Funding
- Driver's Assistance
- Holiday Magic

*Anyone can make a referral!
Abby is happy to help!*

Foster Care vs. McKinney-Vento



Foster Care	McKinney-Vento
District Liaison and Building Point of Contact	
Each school district must designate a District Liaison and a Building Point of Contact in each school.	Each school district must designate a liaison and a point of contact in each school.
School of Origin Rights	
School of origin is the school the student was enrolled in when first placed into foster care. If a child's foster care placement changes, the school of origin would then be considered the school in which the child is enrolled at the time of the placement change.	Students experiencing homelessness are entitled to remain in their school of origin or enroll in the neighborhood school where they are currently residing. School of origin is defined as the school that the child or youth attended when permanently housed or the school in which the child or youth was last enrolled.
Transportation	
Districts must provide transportation to/from school of origin, even if outside of school/district boundaries.	Districts must provide transportation to/from school of origin, even if outside of school/district boundaries.
Immediate Enrollment	
Students in foster care must be enrolled immediately , even when documents normally required are not available (e.g., immunization records, health plan, updated IEP, etc.).	Students experiencing homelessness must be enrolled immediately, even when documents normally required are not available (e.g., immunization records, health plan, transcripts, updated IEP, etc.).
Best Interest Determinations	
Best Interest Determinations must be held prior to changing the school placement of a student in foster care.	A district must educate a homeless child or youth in their school of origin, unless doing so is contrary to the wishes of the parent or guardian.
Free Meals	
All students in foster care qualify for free breakfast/lunch.	All students experiencing homelessness qualify for free breakfast/lunch.
Title I Services	
Students in foster care are categorically eligible for Title I funding. Districts also can develop an (optional) Title I foster care set aside.	Students experiencing homelessness are categorically eligible for Title I funding and districts must develop a Title 1 set aside to support identification and services.

Dispute Resolutions Process and On-Time Grade Level Progression and Graduation	
Dispute Resolution Process and On-time grade level progression and graduation	Dispute Resolution Process and On-time grade level progression and graduation
Fees and Fines	
DCYF is responsible for fees/fines.	Districts must waive all fines and fees for students experiencing homelessness. Fines and fees that cannot be waived must be paid for either through Title I if allowable as a last resort or other available resources.
Attendance	
Monitor Attendance School districts must review unexpected or excessive absences and proactively support students in foster care.	Districts are required to remove barriers to full participation in school. Absences due to homelessness must be excused.

New! Tons of information, training and resources

[OSPI Foster Care Resources and Toolkit](#)



The biggest difference under the new law is that children who remain in their home (under Shelter Care) will NOT be considered foster in most cases.



What does HB 1227 change?

- Increases the standard for police and hospitals to take a child into protective custody through a "law enforcement hold" or a "hospital hold."
- Increases the standard for a court to issue a "pick up order" directing DCYF or law enforcement to take a child into protective custody.
- Increases the standard for the court to order that a child be removed from the home at a shelter care hearing to "**imminent risk of physical harm.**" The evidence must show a causal relationship between conditions in the home and the threat of harm.
- Requires the court to weigh the harm of removal.
- Requires the court to consider if participation in services would prevent the need for removal. If so, should the parent agree to services at the Shelter Care Hearing, the court shall place the child with the parent.
- Requires the court to place with a relative or other suitable person unless placement into foster care is necessary because no relative can provide for the "basic safety" of the child.
- Requires that the court place a child with a relative even if there is an incomplete background check, the relative doesn't believe the parent is a danger to the child, or the relative's home doesn't meet licensing requirements.
- Requires DCYF provide financial support when children are placed with relatives or suitable persons.
- Allows the court to order DCYF to issue an initial foster care license for the relative so they may begin receiving foster care maintenance payments.





McKinney-Vento

Children & Youth who lack a ***fixed, regular, and adequate*** nighttime residence

Unaccompanied Homeless Youth (UHY)

Meet the McKinney-Vento definition and are not in the physical custody of a parent/guardian.

Foster Care

Substitute care away from home/parent and Child Welfare Agency has Placement, care, & authority



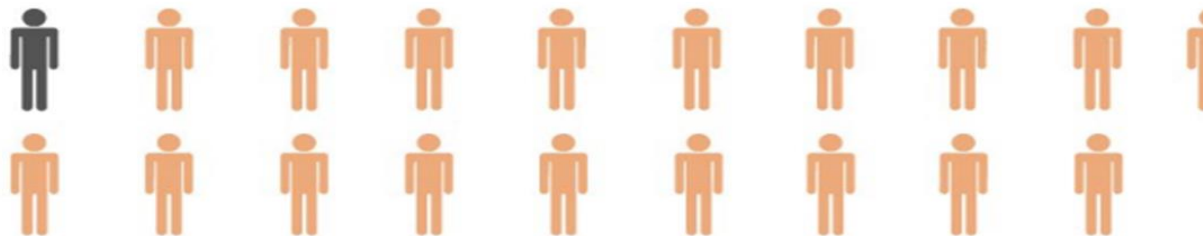
Youth Risk Behavior Survey Data Analysis



Survey results show:

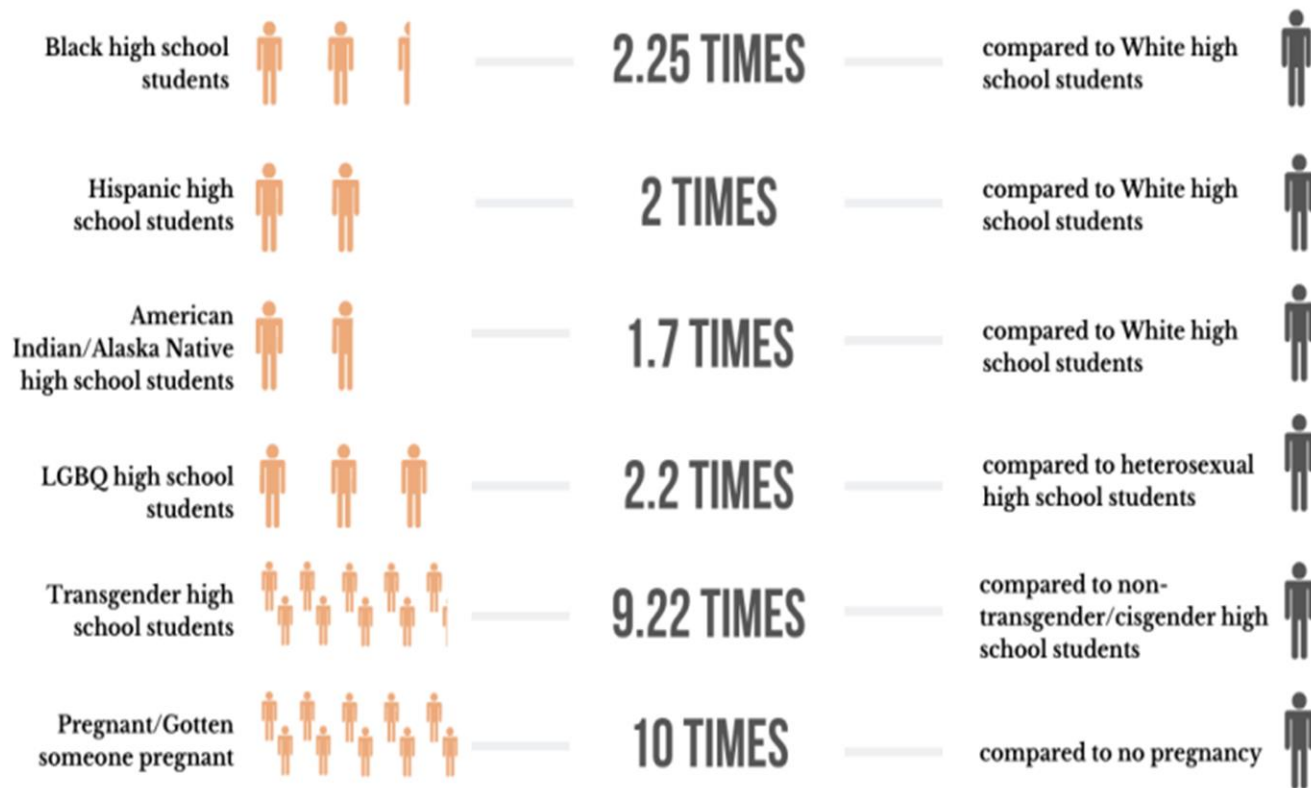
5.4% OF HIGH SCHOOL STUDENTS INDICATED THEY HAD EXPERIENCED HOMELESSNESS IN THE 2018-2019 SCHOOL YEAR

For every 18.5 high school students, 1 has experienced homelessness.



Data: SchoolHouse Connection's analysis of 2019 YRBS data from 27 states (AK, AR, CA, CO, CT, DE, HI, ID, IL, KS, KY, LA, ME, MD, MI, MT, NH, NM, NC, ND, PA, RI, SC, SD, VT, VA, WI)

Kids in Transition Disproportionality





Homelessness causes:

- Chronic health problems
- Trauma
- Mobility



Leading to:

- High rates of chronic absenteeism
- Double the rates of punitive discipline
- Lower graduation rates



And the **lack of a high school degree** is the Greatest single risk factor for young adult homelessness.



Goal: Ensure identification, enrollment, and success in school.

High mobility experienced by KIT students creates educational barriers



Match the circumstances of homelessness with the educational barriers that homelessness creates. You may identify up to three circumstances for each barrier.

<i>Circumstance</i>	<i>Educational Barrier</i>
a. Leaving friends behind	_____ Educational disruption
b. Experiencing the trauma of homelessness	_____ Poor school performance
c. Changing schools	_____ High rates of absenteeism or dropping out
d. Lacking clothing	_____ Undiagnosed learning or special education needs
e. Hunger	_____ Lost credits
f. Moving frequently to temporary locations	_____ Feeling embarrassment or shame
g. Parental stress	_____ Behavior problems
h. Children's fear of not knowing where they will be staying each night	_____ Inability to trust or make friends
i. Stigma of homelessness	_____ Inability to concentrate
j. No place to do homework or study	
k. Insufficient medical care	

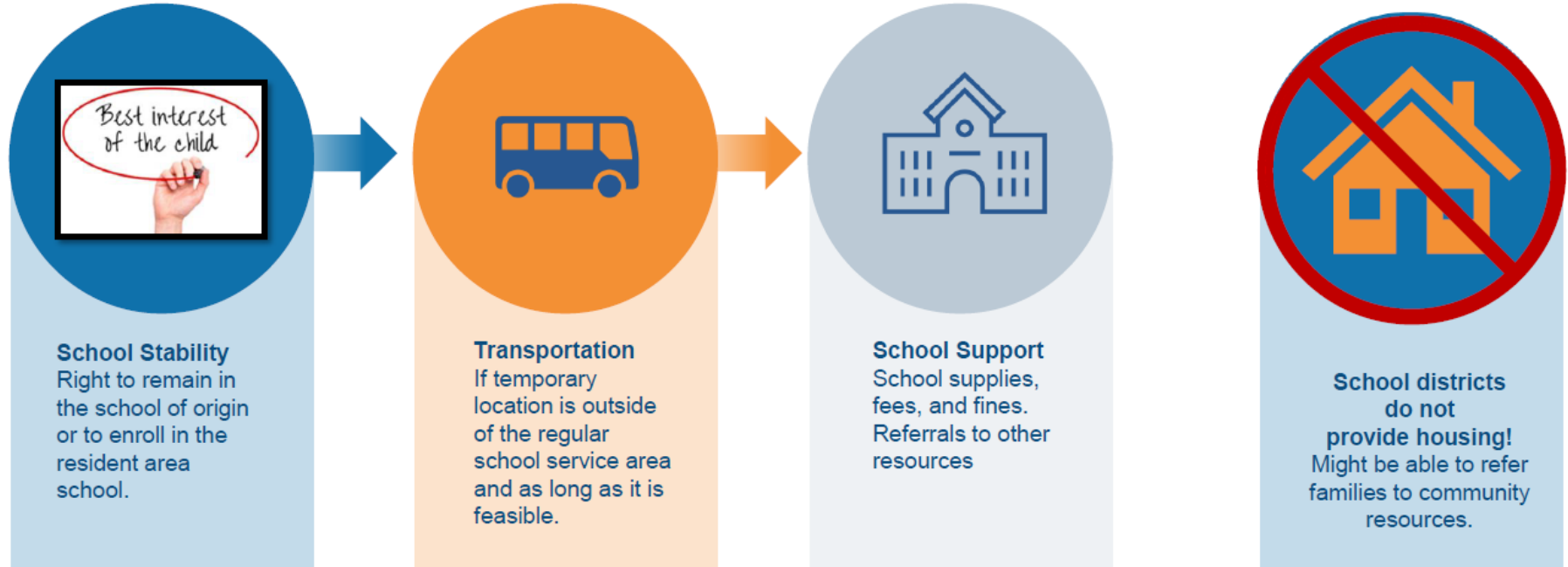
High mobility experienced by KIT students creates educational barriers



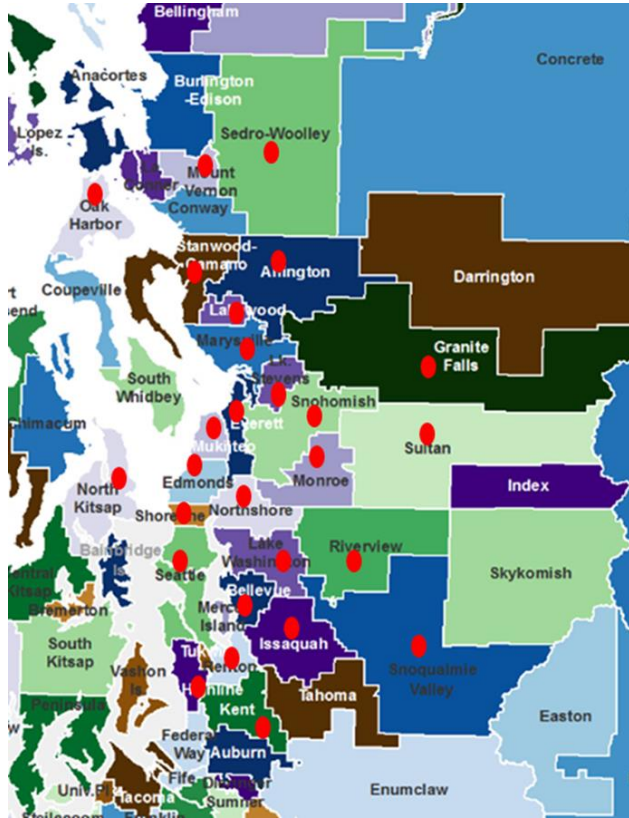
- Educational disruption due to changing schools often multiple times
- High rates of absenteeism and dropping out
- Undiagnosed learning or special education needs
- Inability to focus on studies due to:
 - The trauma of losing their home, belongings, routines
 - Lacking basic needs: food, clothing, health care
- Feeling embarrassment and shame



McKinney-Vento & Foster Education Support



Transportation



Shared between the district where the child is temporarily staying and where they are enrolled.



In one school year EPS provided KIT transportation for over 1500 students (includes those enrolled in our district and those living in our district but attending in others). We shared routes with 29 different districts and 150 different schools!



Things to know about when requesting transportation:



- The magic doesn't happen overnight! This can sometimes take a couple of weeks.
- Typically, the district where the student is enrolled arranges the “from” school; the other districts handle the “to” school. The information from the other school is not available for any staff to see in eschools.
- When submitting a request, it helps to know if there are any special accommodations or siblings, even at other schools!
- Send all requests to the KIT office, not to transportation (see KIT staff toolkit for more guidance)

How can you help KIT students and families?



*Fall Conferences are
coming up!*

- Know who your KIT students are.
- Check in regularly with them to build a relationship and trust.
- Help families learn to communicate with the schools. Is their information correct in eschools? Do they have needs we can help with?
- Explain transportation processes and eligibility.
- Help explain the boundary maps for schools and districts.
- Guide the enrollment processes and have a conversation with parents around the child's best interest of school placement, or to explain the process for applying for a school transfer (aka variance).
- Explore Early Learning options if you find there are younger siblings.



- Help determine options for childcare or other activities before and after school that fit with the school location.
- Explain the importance of attendance and the rules around truancy laws.
- Assist with planning routines as families become more stable.
- Bedtime and morning routines encourage students' readiness to learn.
- Create a transition plan with the family in anticipation of ending KIT eligibility.
- Identify and communicate with the appropriate staff in your building to assist with supporting the student.
- Invite Social Workers to IEP meetings, attendance meetings, events.



- Once a student is stably housed (or no longer in foster care), they are eligible for support through the end of that school year and includes summer school if needed.
- Students may enroll in their resident area school at any time. We encourage transferring at a “natural transition time” like over spring, winter, or summer break.
- At registration in the new school, a parent should alert the new school if they are now stable but would like to finish the school year with support (this can be noted on the student housing form).





Is there a time limit on how long a youth can be considered homeless?

Are families who move in with relatives or friends covered? Yes, if they share the housing due to loss of housing, economic hardship or similar reason. If sharing due to cultural preferences or convenience, may not qualify depending on space, etc.

What is a district's responsibility for advising families about their rights if they do not consider themselves as homeless? Schools must ensure families are aware of the act and what it provides. Schools must disseminate public notice. Once a school has sensitively and discreetly explained the right, families may then choose not to take advantage of McKinney-Vento services at their discretion

How "immediate" is immediate enrollment? "Without delay", which generally means the same or following day



Any changes to contacts or housing?

Report to the KIT office using a student housing questionnaire

Attendance challenges?

Notify the KIT office if they will need transportation, absences/tardies directly related to the housing situation or during times of awaiting district transportation should be excused.

Field trips, Fees & Fines, talk with your OM at Elementary or ASB Secretary at secondary. Make sure they know who is KIT and how to support.

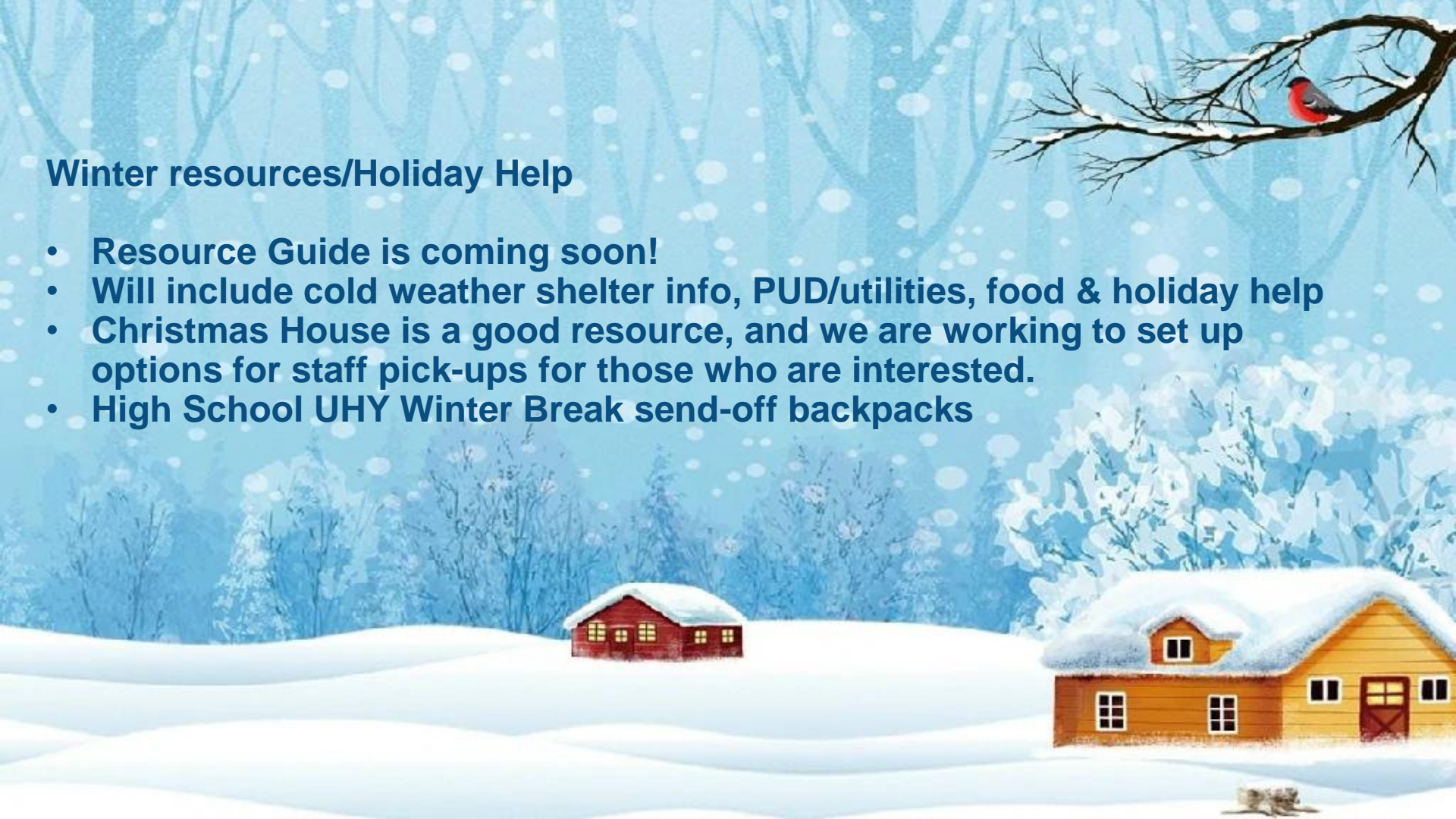
Other Needs- Ask your district KIT rep, read your Monday Messages, check KIT Staff Toolkit.

REMINDER

When contacting the KIT office, use the KIT office email (kitoffice@everettsd.org)

Winter resources/Holiday Help

- Resource Guide is coming soon!
- Will include cold weather shelter info, PUD/utilities, food & holiday help
- Christmas House is a good resource, and we are working to set up options for staff pick-ups for those who are interested.
- High School UHY Winter Break send-off backpacks





Prompts: You've marked that you are living with others. Can you tell me more about this? Is there enough space for everyone? How stable does this feel? How did you come to be in this situation (did you lose your home)?

Questions: Are you all on the lease? Is there a timeframe in which you can stay where you are? Have you contacted 2-1-1?

Reflections: I know it can be challenging to talk about this, it sounds like you might be eligible for extra support for school stability.

Acknowledge: I'm so excited for you, now that you have a stable place. You have had quite the journey. Let's think about next steps for school together.

The hard truth: I'm sorry that we are unable to transport to a daycare out of district. How can we support you in finding an alternative? Have you considered whether it's best for your child to transfer now to the new district?

Family Resource Center- by referral only



HOMELESS - KIT PROGRAM

Overview

Student Housing Form

Community Resources

Teen Links

Shelters & Housing Assistance

Dispute Resolution

KIT Staff Toolkit

Family Resource Center (FRC)



Welcome to the KIT Staff Toolkit

Check here to find the latest information for coordinating support for students who are eligible for support through the Everett Public Schools KIT (Kids in Transition) Program. Please be sure to review the Role of the KIT BPP and get to [know who your building's KIT representative is](#). They are a wealth of information!

Student Housing Questionnaires: Completed at registration, distributed to all families annually for updates, or completed at any time a situation needs to be screened as potentially eligible. Please complete the form and then scan it and email to KIToffice@everettsd.org.

Please print and scan as an attachment: [Arabic](#), [English](#), [Spanish](#), [Russian](#), [Ukrainian](#), [Vietnamese](#)

- See [Office Staff Quick Guide](#) and [KIT FLOWCHARTS](#) for quick information when enrolling new students, identifying possible eligible situations and as a guide for frequently asked questions, like:
 - How can I create a welcoming environment for highly-mobile students and families?
 - Can I enroll a student without proof of address?
 - Can I enroll a student without immunizations being up to date?
 - Are absences for KIT students always excused?
 - What about transportation?
- [Summer School FAQs](#)
- **Family Resource Center Referral** *BPP's can use the FRC Referral for requesting basic needs items from the FRC or to schedule an appointment for a student or family in need of more coordination of services and support than can be covered at the building level. Students/families referred must either be already identified as KIT or at risk of losing their housing, **and** have other facets of coordination needed.
 - This FRC Referral can also be used to request **"Granted Wishes"**
 - rent to prevent a family becoming homeless (up to \$500),
 - move in assistance,
 - temporary hotel stays on rare occasions,
 - and other items not covered by the KIT program or any other scholarship.
 - Wishes are granted by a partnering agency, [WA Kids in Transition](#), as funds are available.

Go to the [KIT staff toolkit](#) (log in as staff to access this)

Family Resource Center Referral

BPP's can use for requesting basic needs items from the FRC or to schedule an appointment for a student or family in need of more coordination of services and support than can be covered at the building level.

Students/families referred must either be already identified as KIT or at imminent risk of losing their housing **and** have other facets of coordination needed after you have exhausted all other resources.

The FRC Referral can also be used by BPP's to request "Granted Wishes". The FRC will determine the best way to meet the need. Funds could come from the KIT office, if eligible, FRC funds, WA Kids in Transition or other resources.

Some examples of a requested Granted Wish (maximum of \$500):

- Rental assistance to prevent homelessness-often pooled with other sources
- Move-in costs to get out of homelessness
- Other items: such as utility assistance, undergarments, haircuts, athletic equipment, car repair, sleeping bags, or air mattresses.
- Short term temporary hotel stays (limited circumstances)

(Please note the old Granted Wishes Request form is no longer active.)

Family Resource Center updates/stats



- **Madrona Square subsidized apartments are FULL.**
 - New openings will be few and far between
 - There is NOT a waitlist for future openings.
- **FRC South will be staffed full time starting Monday by Conchita Chinchilla!**
- **FRC North Region 1 Families**
- **FRC South Region 2 Families (of course some may cross over)**

In the 23-24 school year, the FRC:

- Served 186 families and 403 children
- Met w/families 493 times in person or by phone to meet a specific need(s)
- Provided over 1,500 pounds of food to families and schools
- Made 271 housing connections for families
- Provided \$8,200 in GC's for gas, food, etc.
- Distributed Thanksgiving baskets/GC's through district social workers
- Organized distribution of 140 hoodies and UHY backpacks (with KIT office/CT) to the high schools



KIT Office:

Amy Perusse, KIT Coordinator x4235

Abby Mayers, Foster/Family and Community Engagement Coordinator x4138

Diane Indivero, KIT Admin Assistant x4086

Family Resource Center- by referral only

Lyn Lauzon, Family Resource Coordinator x4654

Conchita Chinchilla, Family Resource Coordinator xTBD

Support Staff:

Chris Fulford, Director Categorical Programs x4030





Request individualized assistance from the KIT team

**Check out the KIT Staff toolkit www.everettsd.org/KIT
login as staff and unlock the goodies in the staff toolkit!**

OSPI Has a ton of resources and trainings:

[McKinney-Vento](#)
[Foster Care](#)

[Schoolhouse Connection](#) is a national non-profit organization working to overcome homelessness through education. We provide strategic advocacy and practical assistance in partnership with early childhood programs, schools, institutions of higher education, service providers, families, and youth.



Housing Form: make sure you are using the most recent version!

As much info as you know/can share helps us make the best determination of qualification.

Where to find the most recent housing forms: Kit Staff Toolkit

<https://docushare.everett.k12.wa.us/docushare/dsweb/Get/Document-92066/HousingQuestionnaireENGLISH.pdf>



THANK YOU!

For being part of our KIT Team

*Complete the evaluation in frontline to
receive credit for this training*

